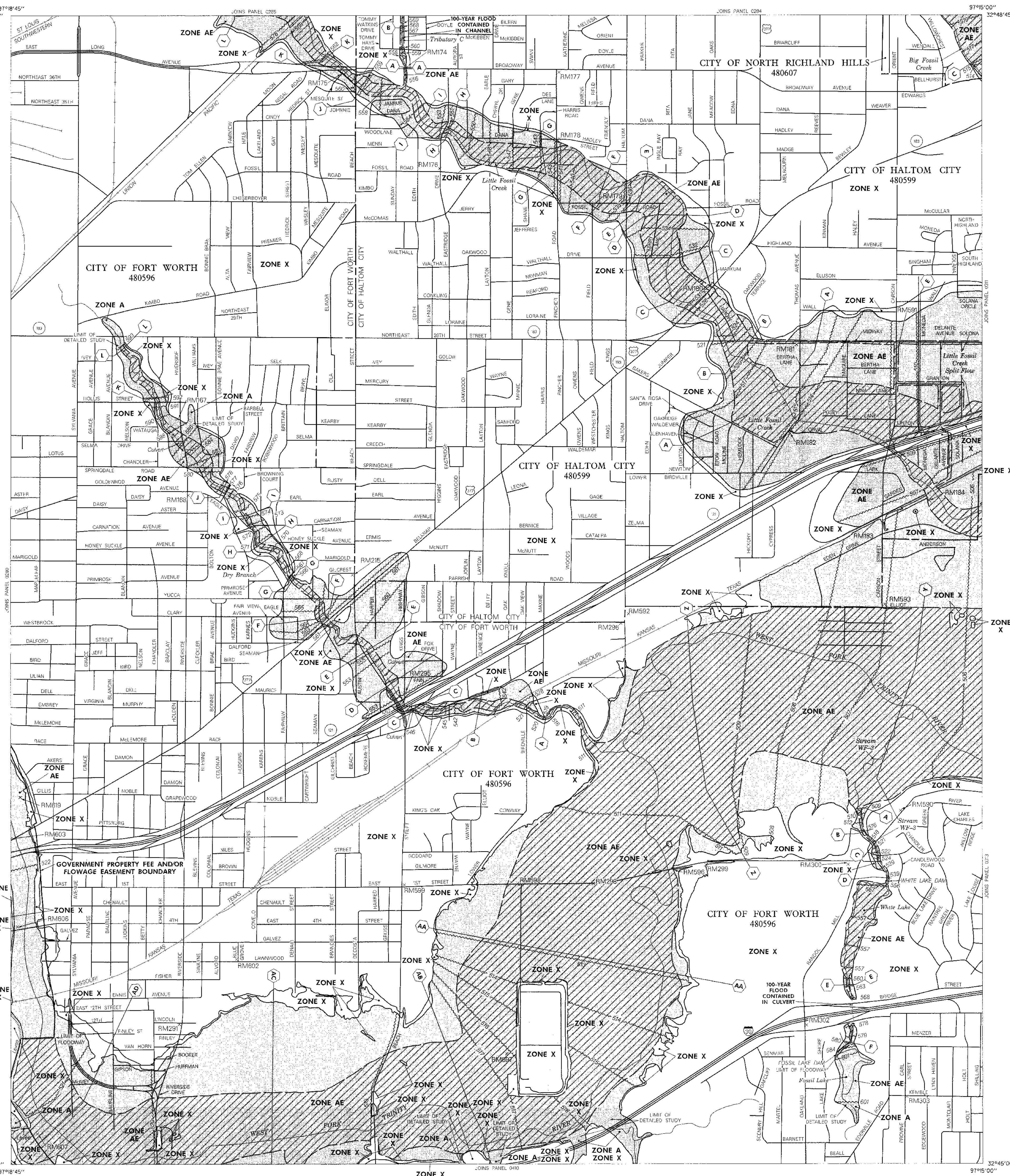


- REFERENCE ELEVATION REFERENCE MARKS
MARK (FEET NGVD) DESCRIPTION OF LOCATION
- 1 RM167 587.20 USGS standard disk stamped 1931 1946 587.204, set in concrete post, located approximately 2.9 miles northeast of county courthouse in Fort Worth, 0.3 mile south of intersection of North River Street and 28th Street, 18 inches west of west curb of River Street, 5 feet north of fire plug, and 3 inches below level of lawn
- 2 RM168 582.88 USGS standard disk stamped 1931 1946 582.883, set in concrete post, located approximately 2.7 miles northeast of county courthouse in Fort Worth at southwest corner of intersection of Riverside Drive and Goldenrod Avenue, 18 inches south of south curb of Goldenrod, 12 feet west of west edge of walk along west side of River Street, and 2 inches below surface
- 3 RM174 559.68 Chiseled square on top of north headwall on west end of Broadway Avenue bridge, approximately 100 feet west of Larry Street
- 4 RM175 557.37 Chiseled square, painted orange on southeast corner of Beach Street bridge over Little Fossil Creek
- 5 RM176 572.75 Filled cross on the northernmost floodplain bolt on fire hydrant at northwest corner of Eastbridge Drive and Fossil Road
- 6 RM177 577.05 Chiseled square at southeast corner of intersection of Broadway Avenue and Fincher Road
- 7 RM178 544.60 Chiseled square at midpoint of curve on top of curb at the northeast corner of Hudley Street and Fincher Road
- 8 RM179 533.96 Chiseled square on southwest corner of concrete curb inlet on north side of Fossil Street, approximately 50 feet west of Halton Road
- 9 RM180 526.81 Filled cross on top of north bonnet bolt at northwest corner of intersection of Bolson (State Route 183) and Markum Drive
- 10 RM181 515.44 Chiseled square on southeast corner of concrete curb inlet on west side of Thomas Avenue, approximately 200 feet southwest of bridge over Little Fossil Creek
- 11 RM182 515.16 Filled cross on top of bonnet bolt at southwest side of fire plug at southeast corner of Orval Road and Thomas Avenue, approximately 200 feet southwest of bridge over Little Fossil Creek
- 12 RM183 510.13 Chiseled square on signal box at northwest corner of Corson Street and Missouri, Kansas, Texas Railroad
- 13 RM184 509.00 Chiseled square on the southwest corner of the Missouri, Kansas, Texas Railroad trestle over Little Fossil Creek
- 14 RM215 562.06 City monument No. 6445, set in west end of 5-foot inlet at southwest corner of Beach Street
- 15 RM291 544.55 USGS standard disk stamped 1932 1946 544.553, set in concrete post, located at southwest corner of intersection of Riverside Drive and East 21st Street, approximately 20 feet west of centerline of Riverside Drive, approximately 30 feet south of centerline of East 12th Street, approximately 13 feet west of street edge post, and 1 foot south of pole line along south side of 12th Street
- 16 RM295 545.47 City monument No. 6494, located at northeast corner of Beach Street and State Route 121, 59 feet east of east curb line Kings Highway and 15 feet north of north curb
- 17 RM296 539.39 Chiseled square cut on top curb, located at southwest corner of intersection of Halton Road and Wheeler Street
- 18 RM298 505.05 City monument No. 47131, located on north side of East 1st Street, approximately 40 feet east of centerline Sewage Disposal Road to sewage treatment plant
- 19 RM299 520.20 City monument No. 6209, located on East 1st Street at the West Fork Trinity River, bridge on south corner of bridge on north end and radius of wingwall
- 20 RM300 521.58 USGS monument No. TT-6-BEH, located approximately 50 feet south of East 1st Street, centerline, and approximately 200 feet west of East 1st Street and Rental Mills Road intersection
- 21 RM302 632.39 City monument No. 6210, located on Oakland Boulevard at Interstate Route 30 overpass in center of east sidewalk at southeast end of bridge
- 22 RM303 643.38 City monument No. 356, located at southeast corner of Carl Street and Kumble Street
- 23 RM590 548.75 Railroad spike set in the south side of a utility pole, located in Fort Worth, on the north side of Rental Mills Road, 0.25 mile north of the intersection of Rental Mills Road, Oakland Boulevard, and 1st Street
- 24 RM591 511.06 Railroad spike set in utility pole, located in Halton City, on the south side of the intersection of Midway Road and Carson Street, 5 feet east of a traffic light pole
- 25 RM592 535.62 Railroad spike set in utility pole, located in Halton City, on the north side of the intersection of Elliott Reader and Halton Road
- 26 RM593 510.25 Railroad spike in a 20 inch tree, located at the northwest corner of Elliott Reader Road and Carson Street
- 27 RM596 520.23 City of Fort Worth Monument # 4299, on east 1st Street at the Trinity River bridge, the southeast corner of the bridge at the north end and radius of the wing wall
- 28 RM597 508.93 Square-cut in the north side of the most northeasterly concrete base for an electric tower, located in Fort Worth, on the south side of Gateway Park Drive, 27 feet south of centerline of Gateway Park Drive, at the intersection of power lines, and 0.4 mile east of Beach Street
- 29 RM598 507.44 Railroad spike set in utility pole, located in Fort Worth, at the entrance to Disposal Road off of 1st Street, about 0.4 mile east of the intersection of Beach Street and 1st Street
- 30 RM599 556.07 Railroad spike set in utility pole, located in Fort Worth, on the northwest corner at the intersection of North Beach Street and 1st Street
- 31 RM602 540.69 Monument disk set in a concrete post, from the intersection of State Highway 35 and State Highway 121, proceed north on I-35 0.8 mile to monument on the right side of road, south of the bridge crossing the West Fork of the Trinity River; monument is 18 feet east of the east guard rail for I-35, 33 feet south west of the top of bank of the river, 63 feet north of a steel light pole, and 66 feet north of the "NORTH SIDE DR. - 1/4 MILE" sign.
- Additional elevations and descriptions for Elevation Reference Marks located on this panel are provided on Panel 48439C0317.



LEGEND

SPECIAL FLOOD HAZARD AREAS INUNDED BY 100-YEAR FLOOD

- ZONE AE** No base flood elevations determined.
- ZONE AH** Base flood elevations determined.
- ZONE AO** Flood depths of 1 to 3 feet (usually crest flow on sloping terrain); average depths determined for areas of alluvial fan flooding; also determined.
- ZONE A99** To be protected from 100-year flood by Federal flood protection system under construction; no base flood elevations determined.
- ZONE V** Coastal flood with velocity hazard (wave action); no base flood elevations determined.
- ZONE VE** Coastal flood with velocity hazard (wave action); no base flood elevations determined.
- FLOOD AREAS IN ZONE AE**
- OTHER FLOOD AREAS**
- ZONE X** Areas of 500 year flood; areas of 100-year flood with average depths of less than 1 foot or with drainage areas less than 1 square mile, and areas protected by levees from 100-year flood.
- OTHER AREAS**
- ZONE X** Areas determined to be outside 500 year floodplain.
- ZONE D** Areas in which flood hazards are undetermined.

UNDEVELOPED COASTAL BARRIERS

- Identified 1981
- Identified 1991
- Otherwise Protected Areas

Coastal barrier areas are normally located within or adjacent to Special Flood Hazard Areas.

Boundaries

- Floodplain Boundary
- Roadway Boundary
- Zone Boundary
- Zone D Boundary
- Boundary Dividing Special Flood Hazard Zones and Boundary Dividing Areas of Different Coastal Base Flood Elevations Within Special Flood Hazard Zones
- Base Flood Elevation Line
- Elevation in Feet, See Map Index for Elevation Datum
- Cross Section Line
- Base Flood Elevation in Foot Vertical Units - Zone 2
- See Map Index for Elevation Datum, Elevation Reference Mark
- River Mile
- Horizontal Coordinates Based on North American Datum of 1983 (NAD 83)

NOTES

This map is for use in administering the National Flood Insurance Program. It does not necessarily identify all areas subject to flooding, particularly from wind-surge caused by small size or alluvial fan flooding. Areas outside Special Flood Hazard Areas (see community map repository) should be consulted for more detailed data on BEs, and for any information on "noisy" elevations prior to use of this map for property purchase or construction purposes.

Areas of Special Flood Hazard (100-year flood) include Zones A, AE, AH, AO, A99, V, VE and D. V, VE and D are not in Special Flood Hazard Areas may be protected by "loss control" structures.

Boundaries of the floodplains were computed at cross sections and interpolated between cross sections. The floodplains were based on hydraulic considerations with regard to requirements of the Federal Emergency Management Agency.

Floodway widths in some areas may be too narrow to show to scale. Refer to Floodway Data Table where floodway width is shown at 1/200 scale.

Coastal base flood elevations apply only to landward of 0.0 NGVD, and include the effects of wave action; these elevations may also differ significantly from those developed by the National Weather Service for hurricane evacuation planning.

Corporate limits shown are current as of the date of this map. The user should contact appropriate community officials to determine if corporate limits have changed subsequent to the issuance of this map.

This map may incorporate approximate boundaries of Coastal Barrier Resource System Units and/or Other Protected Areas, determined under the Coastal Barrier Improvement Act of 1990 (P.L. 101-55).

For community map revision history prior to county-wide mapping, see Section 6.0 of the Flood Insurance Study Report.

For adjusting map panels and area map source see separately printed Map Index.

MAP REPOSITORY

Refer to Repository Listing on Map Index

EFFECTIVE DATE OF COUNTYWIDE FLOOD INSURANCE RATE MAP:

JANUARY 6, 1993

EFFECTIVE DATE(S) OF REVISION(S) TO THIS PANEL:

Map revised August 23, 2000 to change base flood elevations to change coastal flood hazard areas to reflect updated topographic information and to change floodway.

To determine if flood insurance is available, contact an insurance agent or call the National Flood Insurance Program at (800) 638-6620.

APPROXIMATE SCALE IN FEET

1000 0 1000

NATIONAL FLOOD INSURANCE PROGRAM

FIRM

FLOOD INSURANCE RATE MAP

TARRANT COUNTY, TEXAS AND INCORPORATED AREAS

PANEL 295 OF 595

(SEE MAP INDEX FOR PANELS NOT PRINTED)

CONTAINS COMMUNITY	NUMBER	PANEL	SUFFIX
FORT WORTH CITY OF	48439C	0295	J
HALTOM CITY CITY OF	48439C	0296	J
NORTH RICHLAND HILLS CITY OF	48439C	0297	J

MAP NUMBER

48439C0295 J

MAP REVISED:

AUGUST 23, 2000

Federal Emergency Management Agency